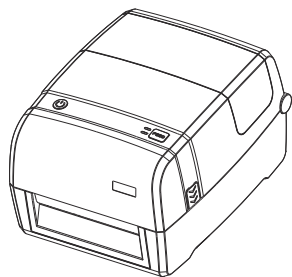
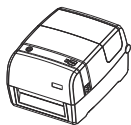


Quick Start Guide TP-48

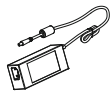


Caution:
This is a Class A product. In a domestic environment this product may cause radio interference in which the user may be required to take adequate measures.

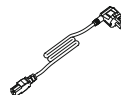
Packing List



Printer



AC Adapter



Power Cord



Label Roll



Ribbon Spindles



CD



Quick Start Guide



USB Cable



Empty Ribbon Core

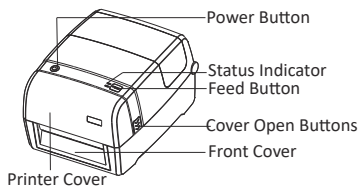


Ribbon

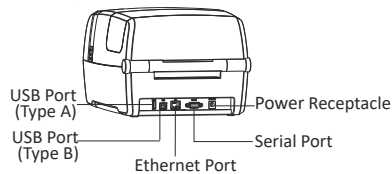
Note: The packing materials are actually based on the order.

Appearance and Components

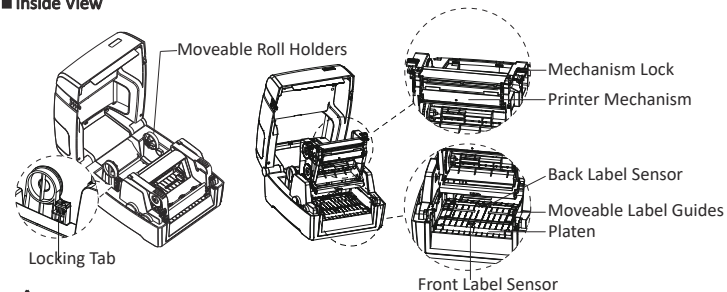
Front View



Rear View



Inside View



Note: The packing materials are actually based on the order.

FCC WARNING :

This device complies with part 15 of the FCC Rules. Operation is subject to the following two conditions: (1) this device may not cause harmful interference, and (2) this device must accept any interference received, including interference that may cause undesired operation.

Any changes or modifications not expressly approved by the party responsible for compliance could void the user's authority to operate the equipment.

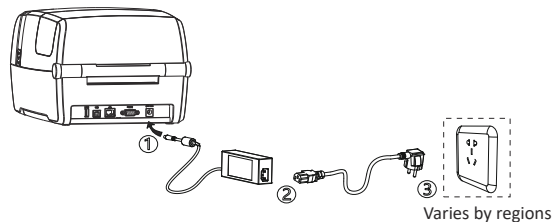
NOTE: This equipment has been tested and found to comply with the limits for a Class A digital device, pursuant to part 15 of the FCC Rules. These limits are designed to provide reasonable protection against harmful interference when the equipment is operated in a commercial environment. This equipment generates, uses, and can radiate radio frequency energy and, if not installed and used in accordance with the instruction manual, may cause harmful interference to radio communications. Operation of this equipment in a residential area is likely to cause harmful interference in which case the user will be required to correct the interference at his own expense.

- Reorient or relocate the receiving antenna.
- Increase the separation between the equipment and receiver.
- Connect the equipment into an outlet on a circuit different from that to which the receiver is connected.
- Consult the dealer or an experienced radio/TV technician for help.

To maintain compliance with FCC's RF Exposure guidelines, This equipment should be installed and operated with minimum distance between 20cm the radiator your body: Use only the supplied antenna.

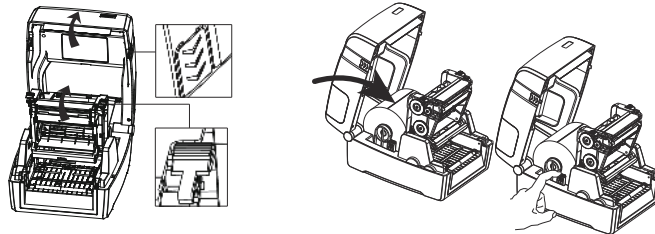
Power Connection

1. Connect the AC adapter to power receptacle.
2. Connect the power cord to AC adapter.
3. Connect the other end of power cord to the outlet.

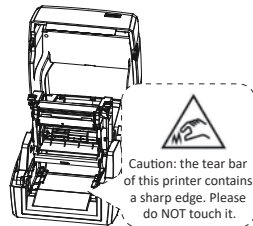


Loading the Roll

1. Press to open the printer cover and mechanism.
2. Pull the roll holders open and place the roll between them. Press down the locking tab.

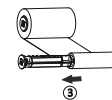
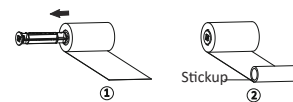


3. Pass the labels through label guides and adjust label guides to label's width.

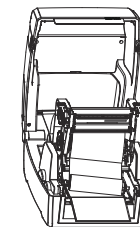
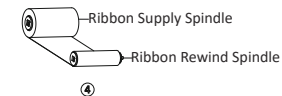
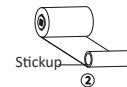


Loading the Ribbon

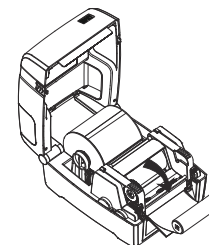
1. Install the ribbon module.



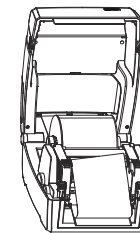
2. Insert the left part of supply spindle and then the right part spindle.



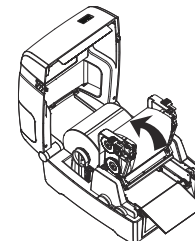
3. Press down the printer mechanism.



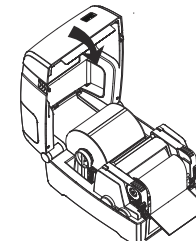
4. Insert the left part of rewind spindle and then the right part.



5. Wind the core 2~3 ciPress down the mechanism and close the cover.



6. Press down the mechanism and close the cover.



! Note: Please refer to windows driver installation in TP-48 User Manual.